

Products

Pelletizer Knives

Helical Pelletizer Rotors

Granulator Knives / Granulator Screens

Sheeter Knives / Pulp Cutter Knives

Machine Knives / Misc. & Special Order

Slitter Knives

Score Knives

Perforator Knives

Pneumatic Knife Holders

Slitter Sleeves / Shafts

Slitter Anvils / Rolls

Multi-Groove Bottom Bands

Shear Blades and Rotary Shears

Paper Trimmer Knives / Cutting Sticks

Scraper Knives

Tooth Cut Off Knives / Packaging Knives

Work Rest Blades / Centerless Grinder Blades / Guides & Cams

Hardened & Ground Machine Ways

Underwater Melt Cutter Die Plates / Die Hard Face Resurfacing

Helical Pelletizer Rotors

Great Lakes Industrial Knife manufactures Helical Pelletizer Rotors for all machine makes and models including Conair, Rieter/Automatik, Ikegai and Cumberland.

Featuring bolt-on, wedge lock, solid head helical pelletizer rotors and Bed knives.

Our Helical Pelletizer Rotors are CNC manufactured to extremely close tolerances.

- Bolt-in Helical Pelletizer rotors
- Wedge lock Helical Pelletizer rotors
- Solid head Helical Pelletizer rotors
- CNC sharpening to OEM specs, .0005" concentricity
- Complete mig weld repairs including bearing journals, eccentrics, rotor bodies & shafts
- Rotor balancing
- Exact tooth profiles – mirror finishes
- Tungsten carbide surface coating
- Bed knives
- Proven extreme condition materials for maximum wearability, toughness and production
- Bed Knives

Performance Engineered Metallurgy

- High wear alloy tool steels
- D-2 High carbon/High chrome tool steel
- Powdered metals, CPM 10V®, CPM M4®
- High performance stainless steels
- Composite tool steels
- Solid Stellite®
- Inlaid Stellite®
- Zirconia ceramics
- Wc Tungsten Carbide and TiC Titanium Carbide hard metals
- ICE™ Inlaid Carbide Extreme

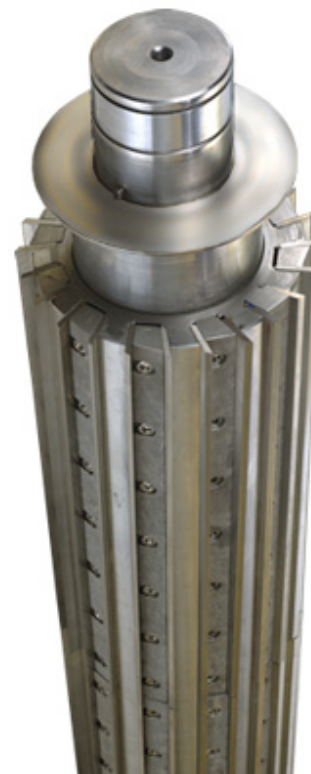
[\[Click here to Download a PDF of this page\]](#)



Stellite® is Registered Trademark of Deloro Stellite Company Inc.

Ferro-TiC® is a registered trademark of Pacific Sintered Metals

CPM 10V®, CPM M4® are registered trademarks of Crucible Materials Corp.



Great Lakes Industrial Knife Company

P.O. Box 14509 • 3261 Copley Road
Akron, Ohio 44321

Email: sales@glknife.com

Website: www.glknife.com

Office: 330-665-1200

Fax: 330-665-1204

Toll-free: 888-665-1200

Great Lakes Industrial Knife accepts:

